

FRAMED ARTWORK SPECIFICATION INFORMATION

- F A S i -



GRAPHIC ENCOUNTER FINE ART

ASPEN / LOS ANGELES

SINCE 1970



TABLE OF CONTENTS

COMPANY OVERVIEW

SINCE 1970

1

ART + DESIGN + CAPABILITIES

1 ON 1 CONSULTING

6

COOL PROJECTS

HOSPITALITY

17

CUSTOM FRAMING + FABRICATION

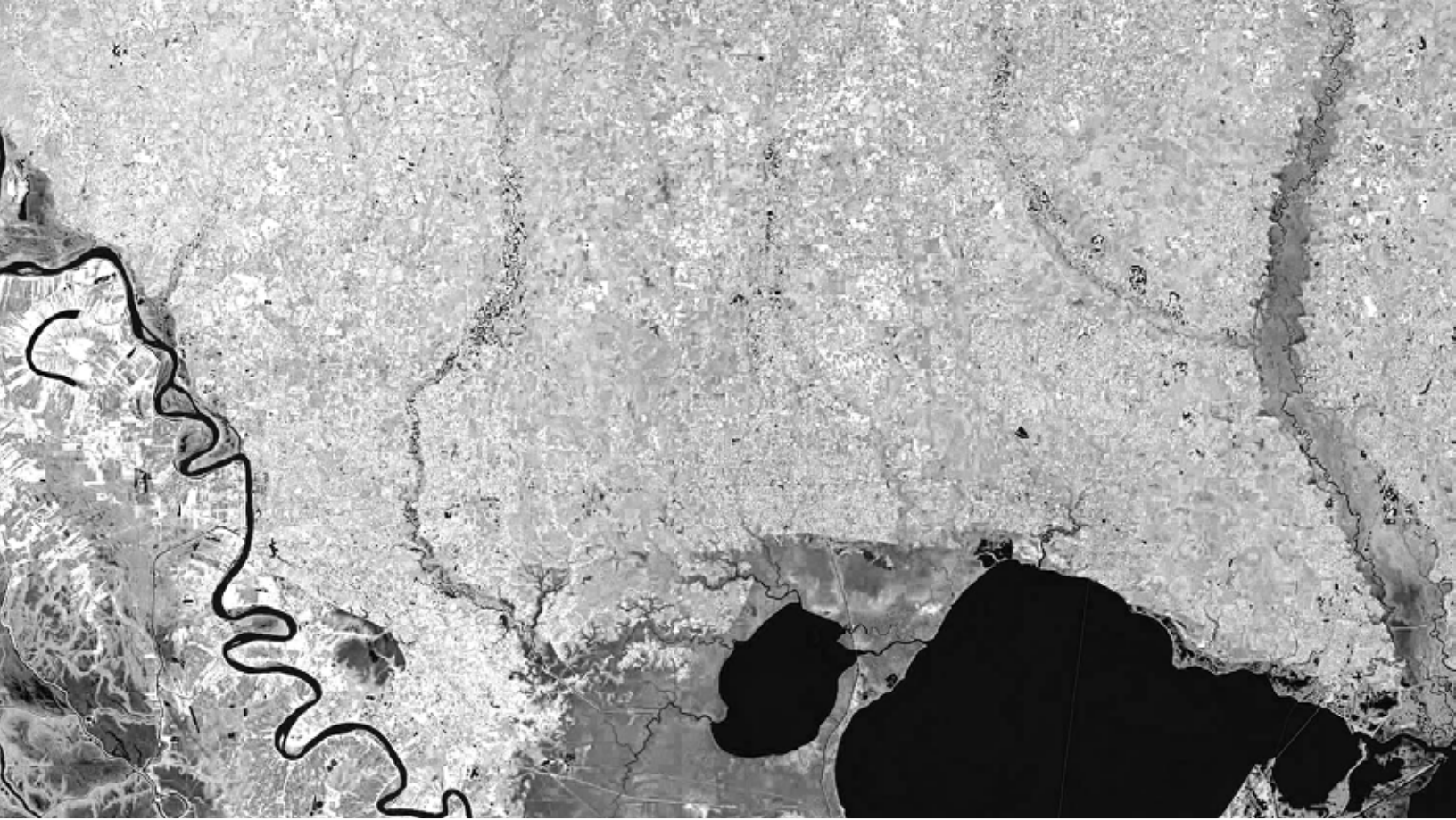
ZERO MISTAKES

34

ACCURATE INSTALLATIONS

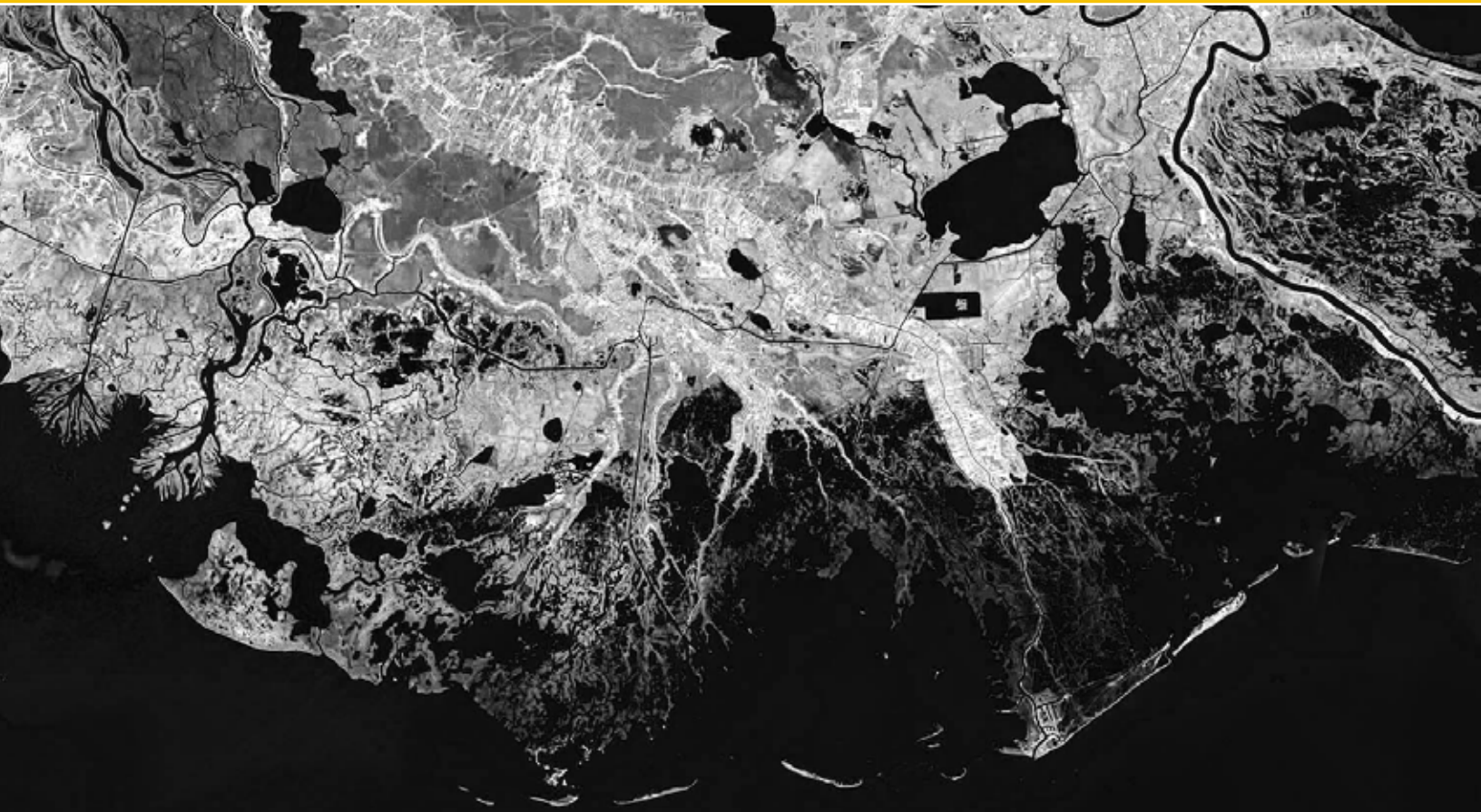
PRECISION

40



COMPANY OVERVIEW

1



GRAPHIC ENCOUNTER FINE ART

ASPEN / LOS ANGELES / 1970

COMPANY OVERVIEW

GRAPHIC ENCOUNTER FINE ART, ESTABLISHED IN 1970, BY RON GOLBUS - PRESIDENT + FOUNDER, IS A PROFESSIONAL FINE ART CONSULTING FIRM, HEADQUARTERED IN ASPEN, COLORADO, AND LOS ANGELES, CALIFORNIA. OUR FIRM SPECIALIZES IN THE CREATION OF ORIGINAL WORKS OF ART, PRINTED ON A VARIETY OF IMAGINATIVE MATERIALS INCLUDING FINE ART PAPERS, FINE ART CANVAS, OPTICALLY CLEAR ACRYLIC, DIBOND METAL, WALL COVERINGS, LAMINATED GLASS, AND PUBLIC AREA SCULPTURE, FOR HOTELS / BOUTIQUE RETAIL / DINING AND ENTERTAINMENT.

OUR FIRM WORKS COLLABORATIVELY WITH RENOWNED INTERIOR DESIGN AND ARCHITECTURAL FIRMS, WHO SPECIALIZE IN THE DESIGN OF LUXURY HOTELS AND MEGA-RESORTS THROUGHOUT NORTH AMERICA.

Graphic Encounter Fine Art provides In-House, One-On-One Fine Art Consulting Services to with Renowned Interior Design and Architectural Firms, who specialize in the design of Luxury Hotels and Mega-Resorts throughout North America.

Graphic Encounter Fine Art's Creative Director, David Jordan Williams, together with his Studio Artists, dialogue directly with your design team and yourself, in response to your design narrative.

NOTABLE HOTEL PROJECTS - SINCE 1970

LAS VEGAS NEVADA

Wynn Las Vegas / Encore at Wynn Las Vegas / Bellagio / MGM Grand / Paris / New York - New York / Delano / Caesars / Palms Hotel / Fremont Hotel / Paris / Resorts World / California Hotel / Cannery Hotel / El Cortez / Sahara Hotel / Station Casino, Nevada

ATLANTIC CITY NEW JERSEY

Caesars Temple Tower / Caesars Resort / Harrah's Atrium Tower / Bally's / Caesars Ocean Tower

NOTABLE NORTH AMERICA PROJECTS

Par-A-Dice Hotel, Illinois / Greektown Hotel and Casino, Michigan / Harrah's North Kansas City, Kansas / Harrah's Waterloo Hotel, Iowa / Tropicana II Verde Restaurant, New Jersey / Little Nell Hotel, Colorado / Union Station, Nashville, Tennessee / Crowne Plaza, Texas / Thunder Valley, California / Hilton Grand Vacation, Utah / LAX Hilton, Los Angeles, California Belterra Casino Resort, Indiana / Paragon Casino Resort, Louisiana / Great Circle Hotel, Tennessee / Tropicana Advantage VIP Lounge, New Jersey / Round Rock Hotel, Texas / Alder & Birch Restaurant, Nevada / Ondori Restaurant, Nevada / Harrah's Buffet, Nevada / Wild West Sports Book, New Jersey / Union Station Hotel, Tennessee / Double Tree, Louisiana / El Dorado Steak House, Colorado / The Rouge Bar, Washington / Cal Sports Lounge, Nevada / W Marriott, Indiana / Indigo Hotel, Texas

GEFA'S DESIGN PROCESS

800.472.7445

1. ESTABLISH THE BUDGET / SCOPE OF WORK

Setting a budget for Guestrooms, Public Areas, Restaurants, Boutique Retail, Entertainment, Commercial spaces, or any other project venue, will greatly assist our design and production teams to help you identify, the look and feel of your project.

2. SELECT YOUR PRINTING SUBSTRATE:

We offer Fine Art Paper, Fine Art Canvas, Dibond® Metal, Optically Clear Acrylic, Laminated Glass, Wood, and Wallcovering.

3. ESTABLISH YOUR DESIGN NARRATIVE:

Working One-On-One with our In-House Design Studio, Williams Studio, places your team and yourself in direct communication with David Jordan Williams, President of Williams Studio.

Providing A brief and descriptive design narrative directly to David Jordan Williams will result in a full-color presentation of imagery that directly correlates to your design vision.

Samples of selected images will be provided to your design team at no charge.

4. SELECT YOUR CUSTOM FRAMING OPTIONS:

Once you have decided upon the custom art images, and the substrates for your project, the next step is to choose the exact frame shapes/colors to enhance your art selections.

Samples of selected moldings will be provided to your design team at no charge.

C
U
S
T
O
M

GRAPHIC ENCOUNTER FINE ART

ASPEN / LOS ANGELES / 1970



CREATIVE COLLABORATION = ARTISTIC PERFECTION



1970

PERFECT ART SPECIFICATION

800.472.7445

A
V
O
I
D

C
O
S
T
L
Y

M
I
S
T
A
K
E
S

- (1) Item Number
- (2) Quantity
- (3) Image Size
- (4) Outside Dimension
- (5) Substrate - Fine Art Paper, Fine Art Canvas, Acrylic, Metal, Glass
- (6) Matting - 4 or 8-Ply, Color, Single Mat, Double Mat, Linen
- (7) Framing - Canvas Floater or Shadowbox + Moulding Number
- (8) Glazing - Clear Glass, Non-Glare Glass, Clear Acrylic
- (9) Security Hardware -Three Point, Four Point, Z-Bar
- (10) Side Mark - Item #, Purchase Order #, Location
- (11) Artwork Protection - Dust Cover + Paper Corners + Shrink Wrap Around Entire Piece, To Prevent Vibrational Damage During Transit and Installation
- (12) Boxing/Packing - Individual Box Or Combined Packaging

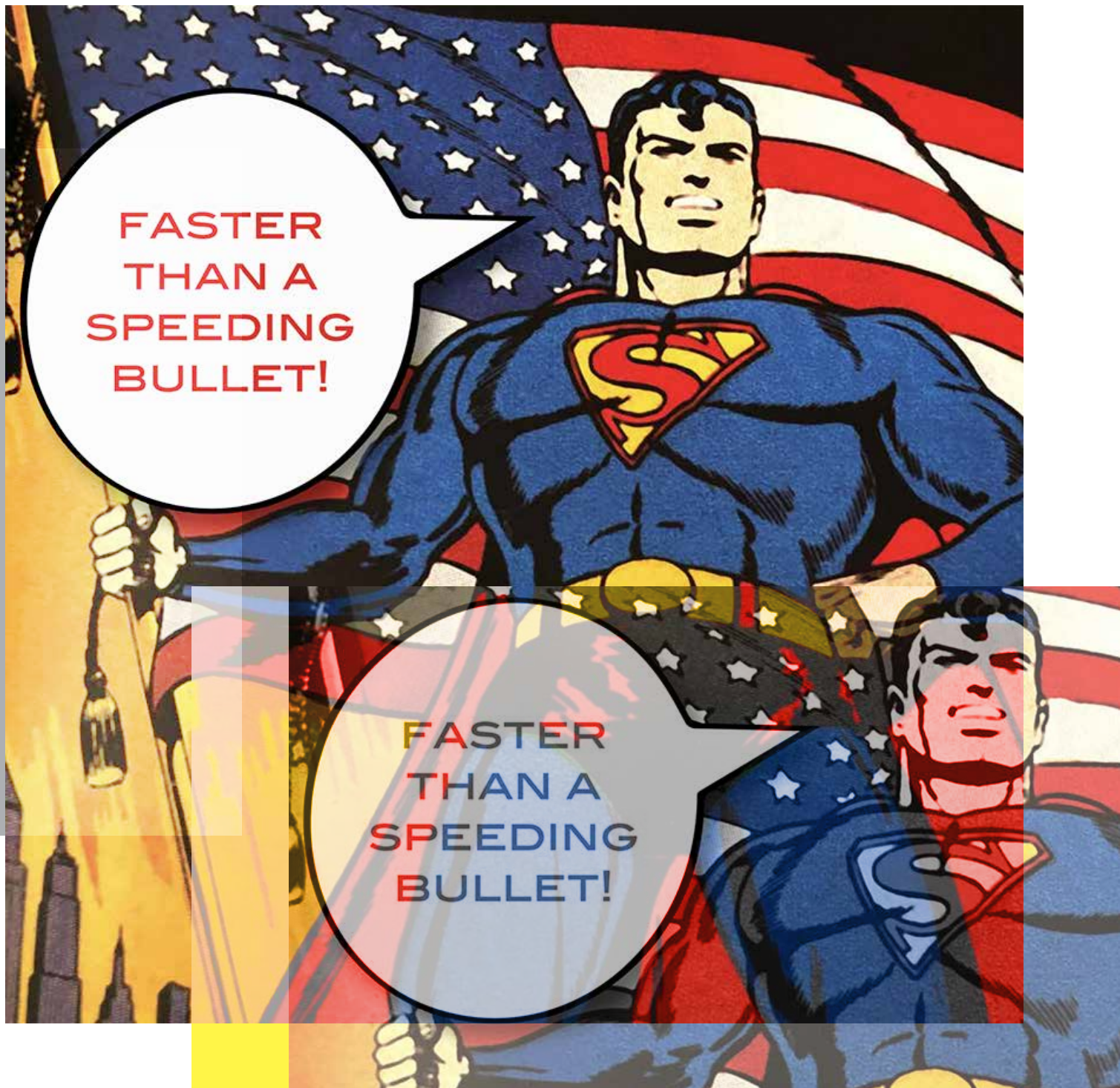


ART + DESIGN + CAPABILITIES



GRAPHIC ENCOUNTER FINE ART

ASPEN / LOS ANGELES / 1970



GRAPHIC ENCOUNTER FINE ART

ASPEN / LOS ANGELES / 1970

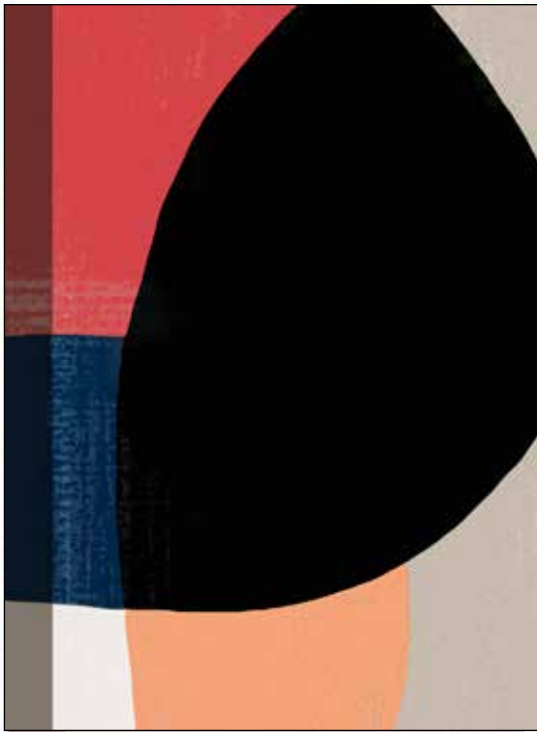
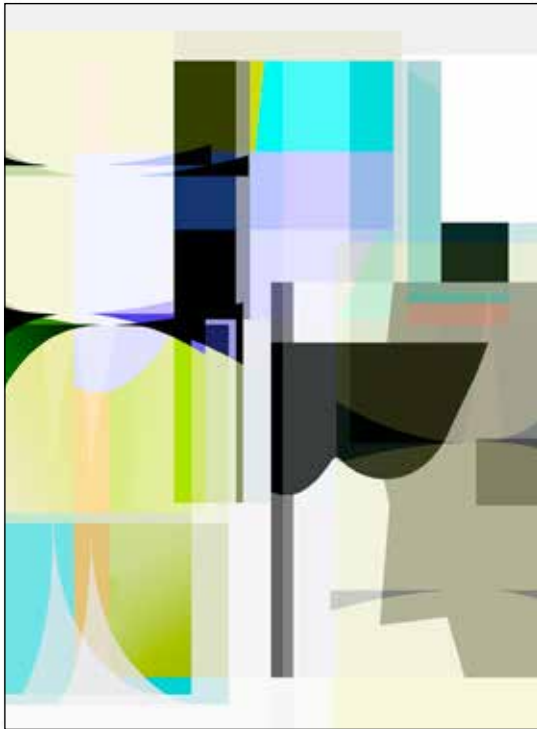
“YOUR TIMELY TURNAROUND AND
QUALITY IN ALL ASPECTS OF YOUR
PRODUCT, FROM QUOTE TO
INSTALLATION, IS UNMATCHABLE.

WORKING WITHIN A TIGHT TIME CRUNCH,
GRAPHIC ENCOUNTER NOT ONLY PRODUCED
A BEAUTIFUL PRODUCT, BUT WAS ALSO THE
FIRST TO ARRIVE ON SITE.”

SUSAN LAINE CORSO
SENIOR INTERIOR DESIGNER
R2 ARCHITECTS, LLC
ATLANTIC CITY, NEW JERSEY

GRAPHIC ENCOUNTER FINE ART

ASPEN / LOS ANGELES / 1970



DESIGN-DRIVEN CUSTOM ARTWORK

GRAPHIC ENCOUNTER FINE ART

ASPEN / LOS ANGELES / 1970



1



2



3



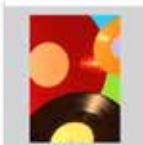
4



5



6



7



8



9



10



11



12



13



14



15



16



17



18



19



20



21



22



23



24



25



26



27



28



29



30



31



32



33



34



35

CUSTOM CURATION / CREATION 1 ON 1

GRAPHIC ENCOUNTER FINE ART

ASPEN / LOS ANGELES / 1970



CUSTOM ARTWORK ON METAL

GRAPHIC ENCOUNTER FINE ART

ASPEN / LOS ANGELES / 1970



CUSTOM ARTWORK ON WALLCOVERING



GRAPHIC ENCOUNTER FINE ART

ASPEN / LOS ANGELES / 1970



CUSTOM ART ON FINE ART PAPER



1970

GRAPHIC ENCOUNTER FINE ART

ASPEN / LOS ANGELES / 1970



CUSTOM ARTWORK ON FINE ART CANVAS



1970

GRAPHIC ENCOUNTER FINE ART

ASPEN / LOS ANGELES / 1970



CUSTOM ARTWORK ON ACRYLIC



**1
9
7
0**

GRAPHIC ENCOUNTER FINE ART

ASPEN / LOS ANGELES / 1970



COMMISSIONED SCULPTURE FOR PUBLIC SPACES





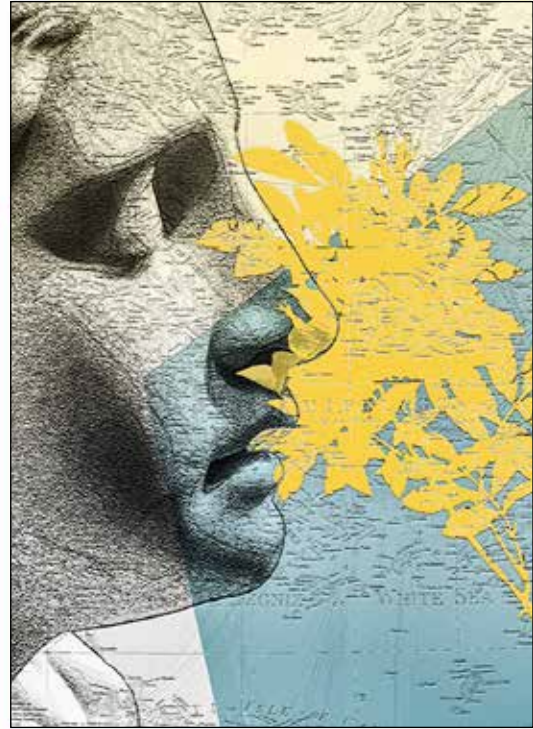
PROJECTS

17



GRAPHIC ENCOUNTER FINE ART

ASPEN / LOS ANGELES / 1970



1 ON 1 ONE ART CONSULTING PORTFOLIO

IL VERDI RESTAURANT

TROPICANA CASINO & RESORT - ATLANTIC CITY, NEW JERSEY
SOSH ARCHITECTS - ATLANTIC CITY, NEW JERSEY

Establishing the Budget -

Graphic Encounter Fine Art, headquartered in Aspen, Colorado and Los Angeles, California, was engaged by **SOSH Architects** of Atlantic City, New Jersey, to custom design 7 original works of art, which would subsequently be infused into large scale, laminated tempered glass surface assemblages, for the 2020 design of **Il Verdi Restaurant** at the **Tropicana Casino and Resort, Atlantic City, New Jersey**.

Although there was no precise artwork budget established for the large format glass artwork panels, our design and fabrication directive, was to create expressively colorful abstract designs, that would provide the focus of the public area art in the restaurant, while, at the same time, being sensitive to competitive pricing guidelines. As the project unfolded, our specifications were provided to Tropicana Purchasing, and the custom artwork laminated panels, were purchased directly by the property.

The Design Narrative -

SOSH Architects, with offices in New York, Philadelphia, and Atlantic City New Jersey, is a well respected Architectural firm, that specializes in Hospitality, Entertainment, and Gaming projects. Michael Mangini, Design Director for **SOSH**, contacted **Graphic Encounter Fine Art**, to design and provide, original art designs on laminated glass wall panels, for **Il Verdi Restaurant - Tropicana Casino and Resort / Atlantic City, New Jersey**. Upon completion of the project, we were favored to receive, a testimonial from Michael Mangini, which we proudly have provided for your reading pleasure below.

The Custom Art Curation -

David Jordan Williams, creative director for **GEFA**, worked closely with the principals of **SOSH Architects**, including Michael Mangini, the Design Director, to collaboratively create numerous, vibrantly colored tempered glass panels, for the high-end Italian Restaurant, **Il Verdi**, that resides in the **Tropicana Casino Resort** property.

Fabrication -

David's unique glass designs, were digitally provided to one of our most reliable glass design and laminating service resources, for their fabrication. These original - vibrant color designs, once received by our glass resource, were generated molecularly, into the back side of the top 1/4" tempered glass sheet, utilizing the ALICE or Dip-Tech digital glass printing infusion technology.

The glass vendor professionally packed each of these panels in custom wood crates and delivered the crates directly to the job site, to ensure the safe delivery of the pieces to the project. Once received, the General Contractor installed these panels with custom polished aluminum moldings to hold the assemblages securely in place.

GRAPHIC ENCOUNTER FINE ART

ASPEN / LOS ANGELES / 1970



**ORIGINAL ARTWORK / TEMPERED - LAMINATED GLASS
ILLUMINATED BY LED LIGHTING**

GRAPHIC ENCOUNTER FINE ART

ASPEN / LOS ANGELES / 1970



**ORIGINAL ARTWORK / TEMPERED - LAMINATED GLASS
ILLUMINATED BY LED LIGHTING**

GRAPHIC ENCOUNTER FINE ART

ASPEN / LOS ANGELES / 1970

Testimony -

"My most recent collaboration with Ron Golbus, President, and David Jordan Williams, Creative Director, Graphic Encounter Fine Art, brought to life multiple large-scale custom abstract works of art for Tropicana Casino and Resort, IL Verdi Italian Restaurant.

Each large-scale piece was inspired by David's hand painted brush strokes in vibrant hues of Cobalt Blues, Racing Yellows and Cabernet Reds. The art works were digitally printed on 1/2" thick tempered glass. In addition, each one-of-a-kind piece, is back lit with optical grade LED light panels, which brings the art to life. They are truly visually stunning in the space.

I have had the pleasure of knowing and working with Ron Golbus, Founder and President of Graphic Encounter Fine Art for many years. As Design Director for SOSH Architects, many of our High-Profile Hospitality, Entertainment and Gaming projects require an "out-of the box" approach when it comes to art content and completion.

From hotel tower guest rooms, boutique retail, dining and entertainment venues, Graphic Encounter Fine Art's dedication to each and every design project always delivers excellence, on time and on budget."

Michael Mangini CID - Design Director - SOSH Architects



PARAGON HOTEL

MARKSVILLE, LOUISIANA



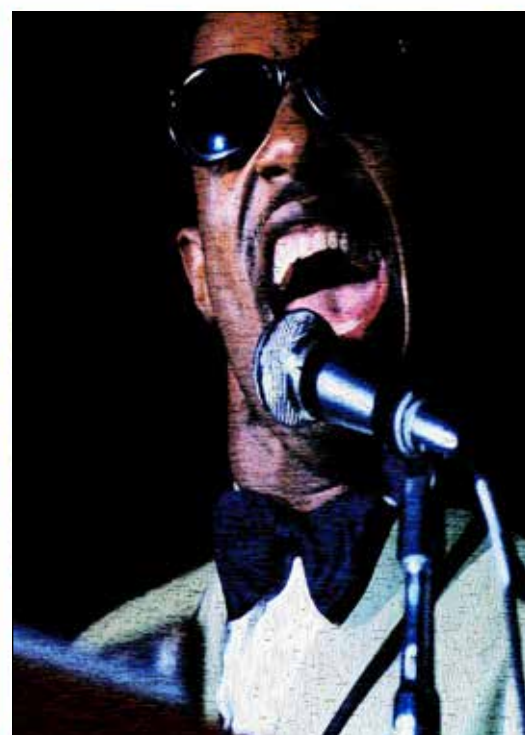
THE COSMOPOLITAN HOTEL

LAS VEGAS, NEVADA



GREEKTOWN CASINO HOTEL

DETROIT, MICHIGAN



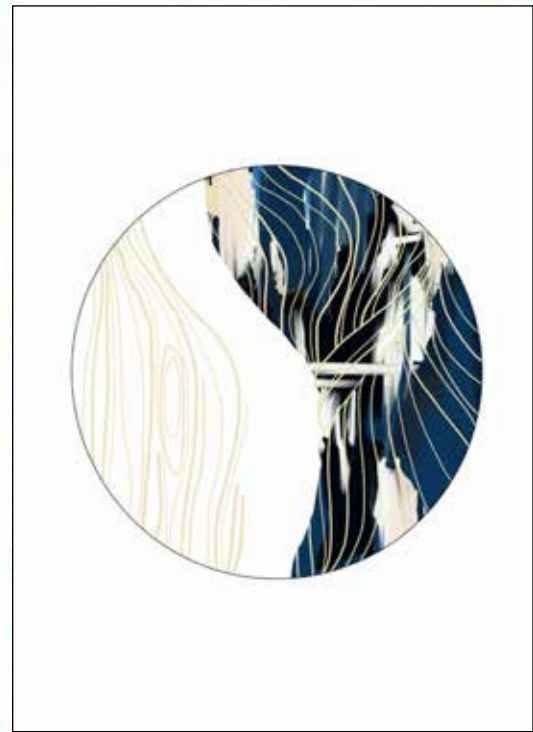
HARRAH'S RESORT ATLANTIC CITY

ATLANTIC CITY, NEW JERSEY



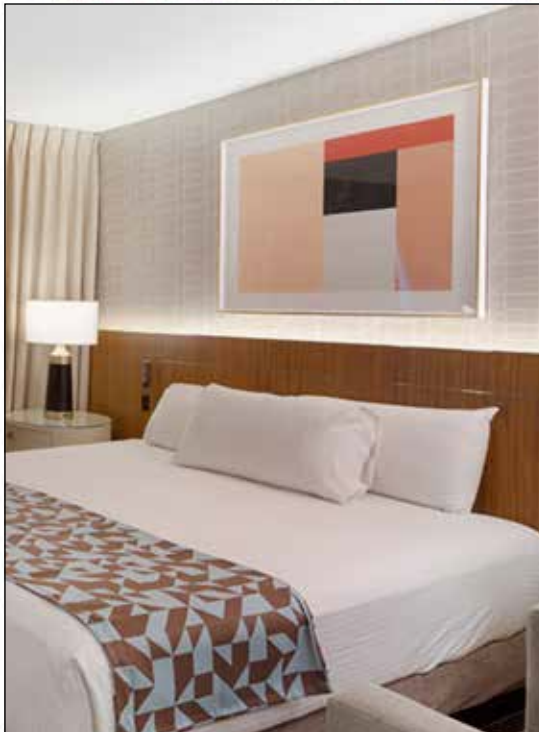
RESORTS WORLD

LAS VEGAS, NEVADA



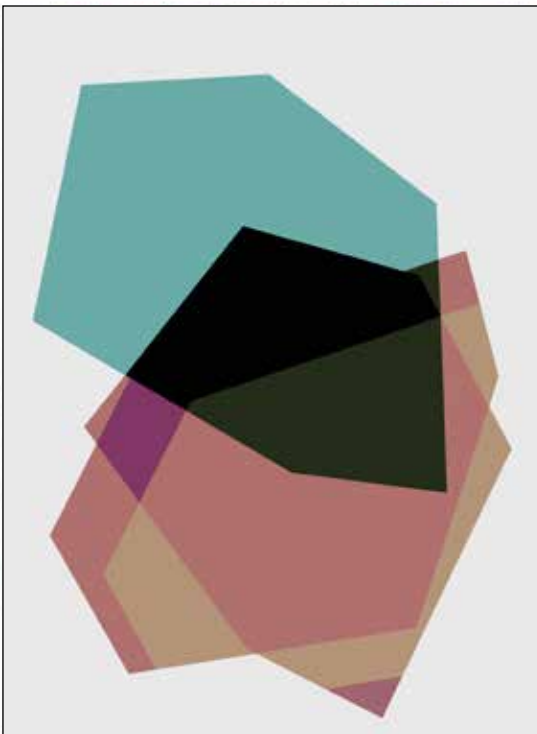
FREMONT HOTEL

LAS VEGAS, NEVADA



BELTERRA CASINO HOTEL

FLORENCE, INDIANA



HARRAH'S ATRIUM HOTEL

ATLANTIC CITY, NEW JERSEY



THE LITTLE NELL HOTEL

ASPEN, COLORADO



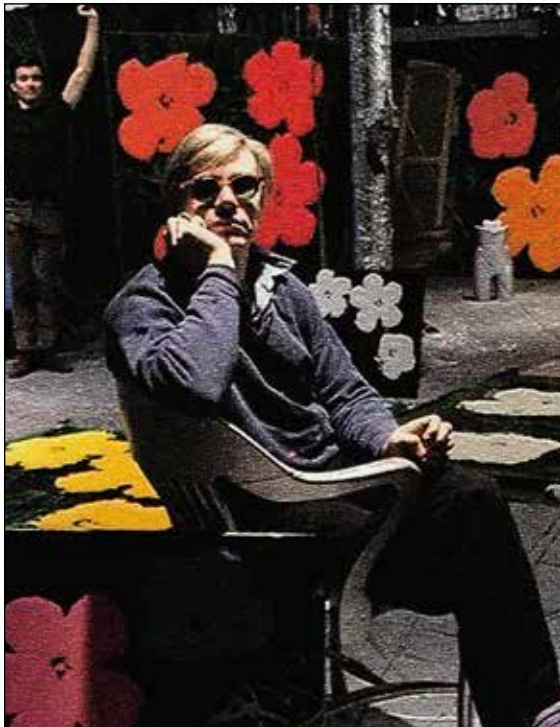
WYNN LAS VEGAS

LAS VEGAS, NEVADA



"YOU DID A GREAT JOB"

STEVE WYNN
CHAIRMAN AND CEO
WYNN RESORTS

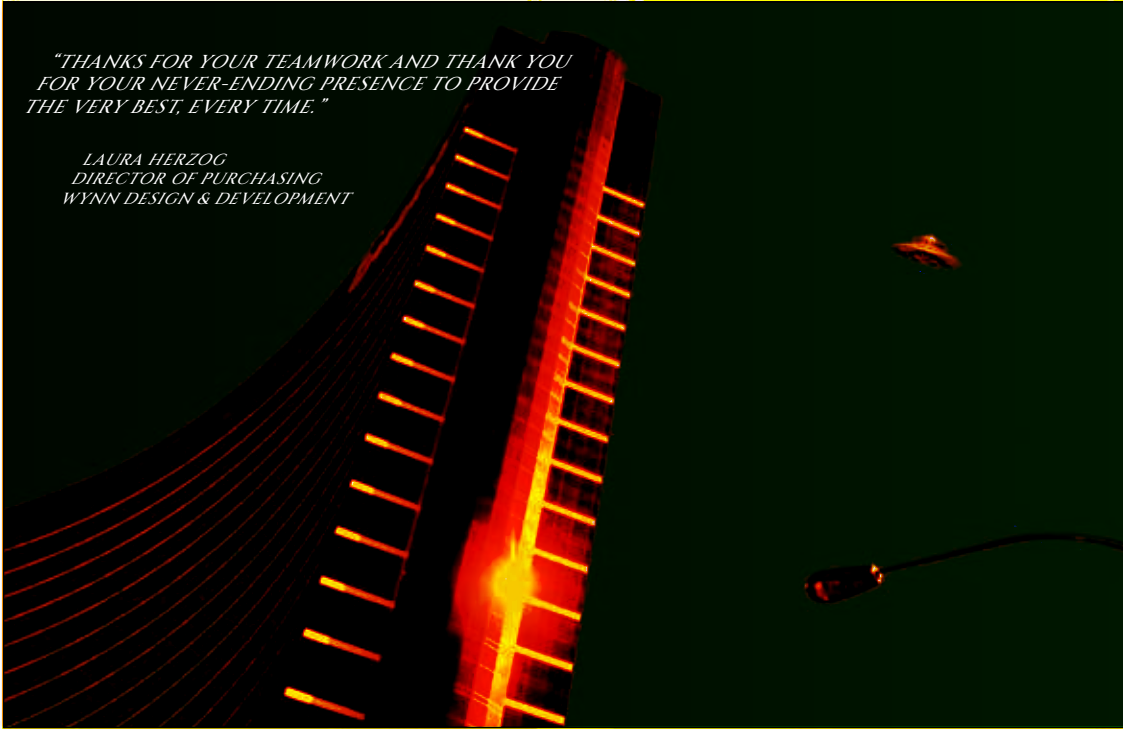


ENCORE AT WYNN LAS VEGAS

LAS VEGAS, NEVADA

"THANKS FOR YOUR TEAMWORK AND THANK YOU FOR YOUR NEVER-ENDING PRESENCE TO PROVIDE THE VERY BEST, EVERY TIME."

*LAURA HERZOG
DIRECTOR OF PURCHASING
WYNN DESIGN & DEVELOPMENT*



In a chance meeting, some two years subsequent to my firm having completed Wynn Las Vegas, Steve Wynn, Chairman of Wynn Resorts, asked me if I would be able to provide custom fine art imagery on canvas for an exciting new luxury hotel project.

I said that my firm could most certainly provide that. Some 12 months later my firm was awarded the prestigious contract to provide over 3,000 custom images on Fine Art Canvas for the new **Encore at Wynn Las Vegas**. This art style of printing imagery on Fine Art Canvas, was the first time that Fine Art Canvas was used as a substrate in the guest rooms of a major luxury hotel.

The '08 original painting - memorialized the grand opening of **Encore at Wynn Las Vegas** in 2008.

Ron Golbus





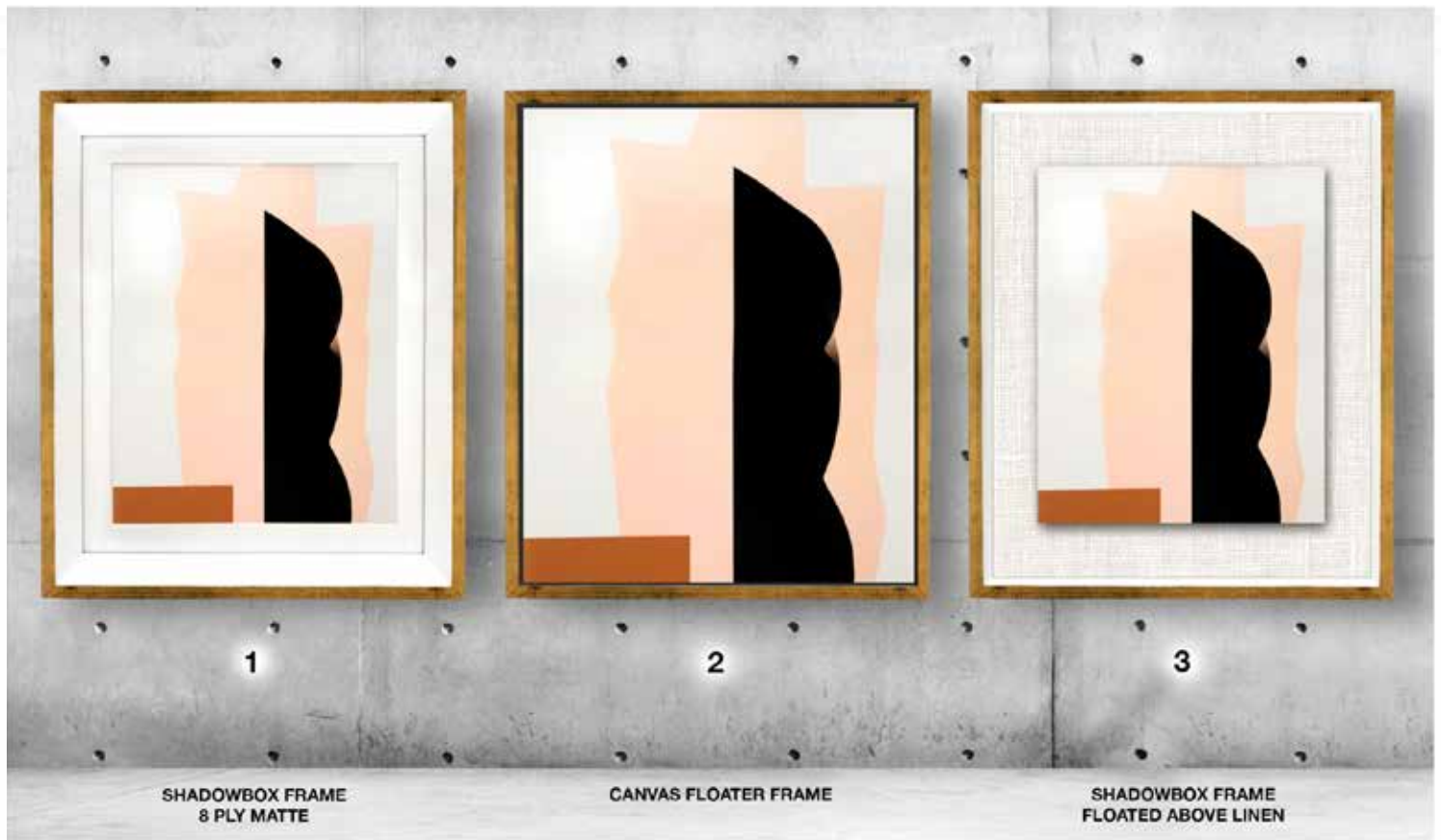
CUSTOM FRAMING + FABRICATION



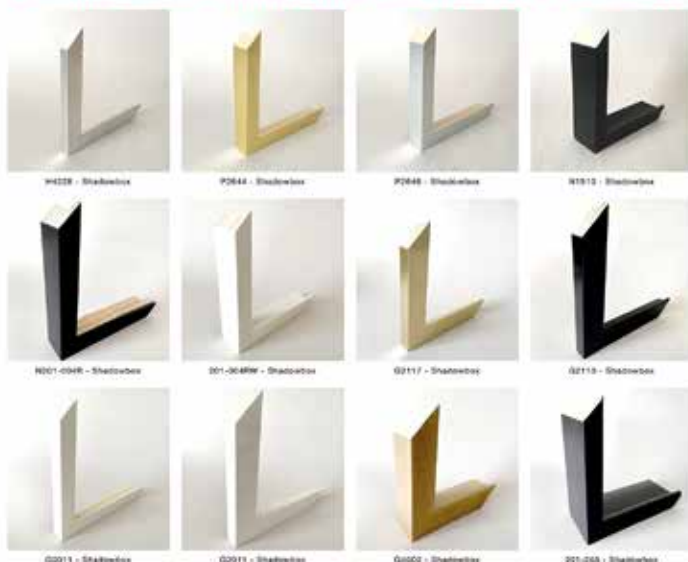
GRAPHIC ENCOUNTER FINE ART

ASPEN / LOS ANGELES / 1970

CUSTOM FRAMING STYLES



SHADOWBOX MOULDING



SHADOWBOX FRAMES - UTILIZED IN THE CUSTOM FRAMING OF FINE ART PAPER

CANVAS MOULDING



CANVAS FLOATER FRAMES - UTILIZED IN THE CUSTOM FRAMING OF FINE ART CANVAS

1970

GRAPHIC ENCOUNTER FINE ART

ASPEN / LOS ANGELES / 1970

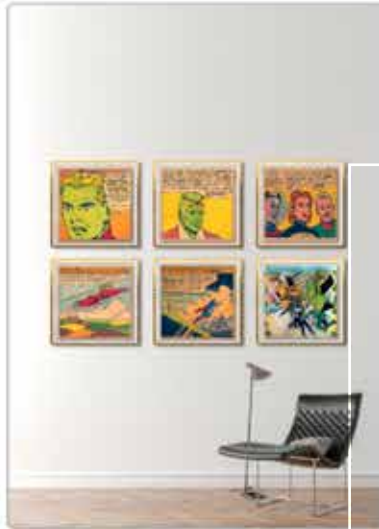


PERFECT CORNER FABRICATION
DOUBLE STACKED FRAMES
FABRICATION EXCELLENCE



GRAPHIC ENCOUNTER FINE ART

ASPEN / LOS ANGELES / 1970



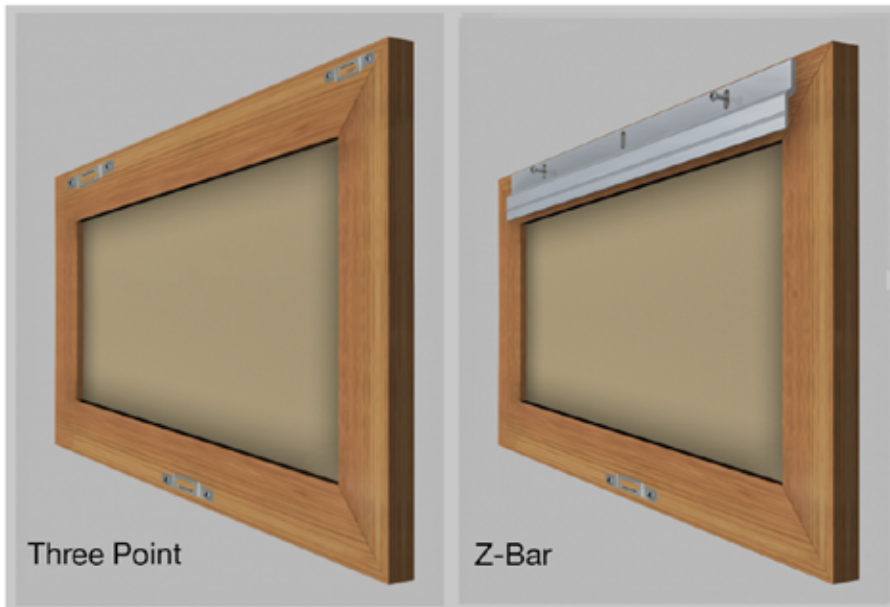
GALLERY GRID LAYOUTS



GRAPHIC ENCOUNTER FINE ART

ASPEN / LOS ANGELES / 1970

SECURITY HARDWARE OPTIONS



(1) - Various Security Hardware Options:

Every art + mirror specification instruction "that we see" instructs GEFA to use "three point locking hardware". However, this instruction does not correctly anticipate all intended applications.

(2) - Specify:

Vendor to apply locking hardware in the same location on each picture. Vendor to provide installation wrench and all additional components in a separate carton/container to be identified on the bill of lading as a separate line item.

(3) - French Cleat - Z-Bar:

If the size of your artwork is over 40" wide, or the weight is over 75 lbs. - Specify: French Cleat / Z-Bar at the top (75% of the width)
Specify: Two security hardware brackets, to be placed 3" in, on both sides of the frame, at the bottom.

(4) - Installation Brackets:

Items seem to get lost after receipt...so a separate line item on the Bill of Lading helps ensure the accountability of the receiving warehouse. If however, more security hardware items are required, please contact us: 800.472.7445

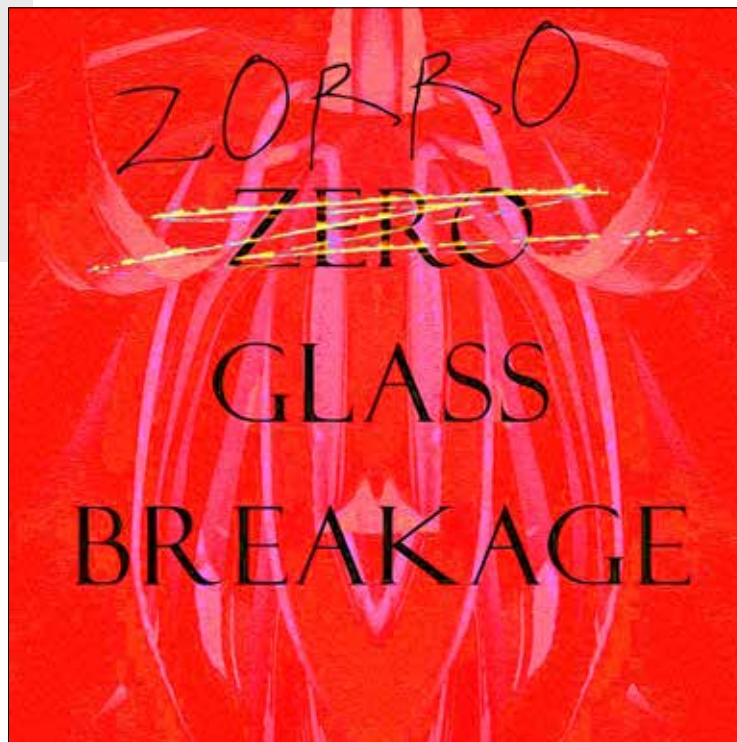


GRAPHIC ENCOUNTER FINE ART

ASPEN / LOS ANGELES / 1970



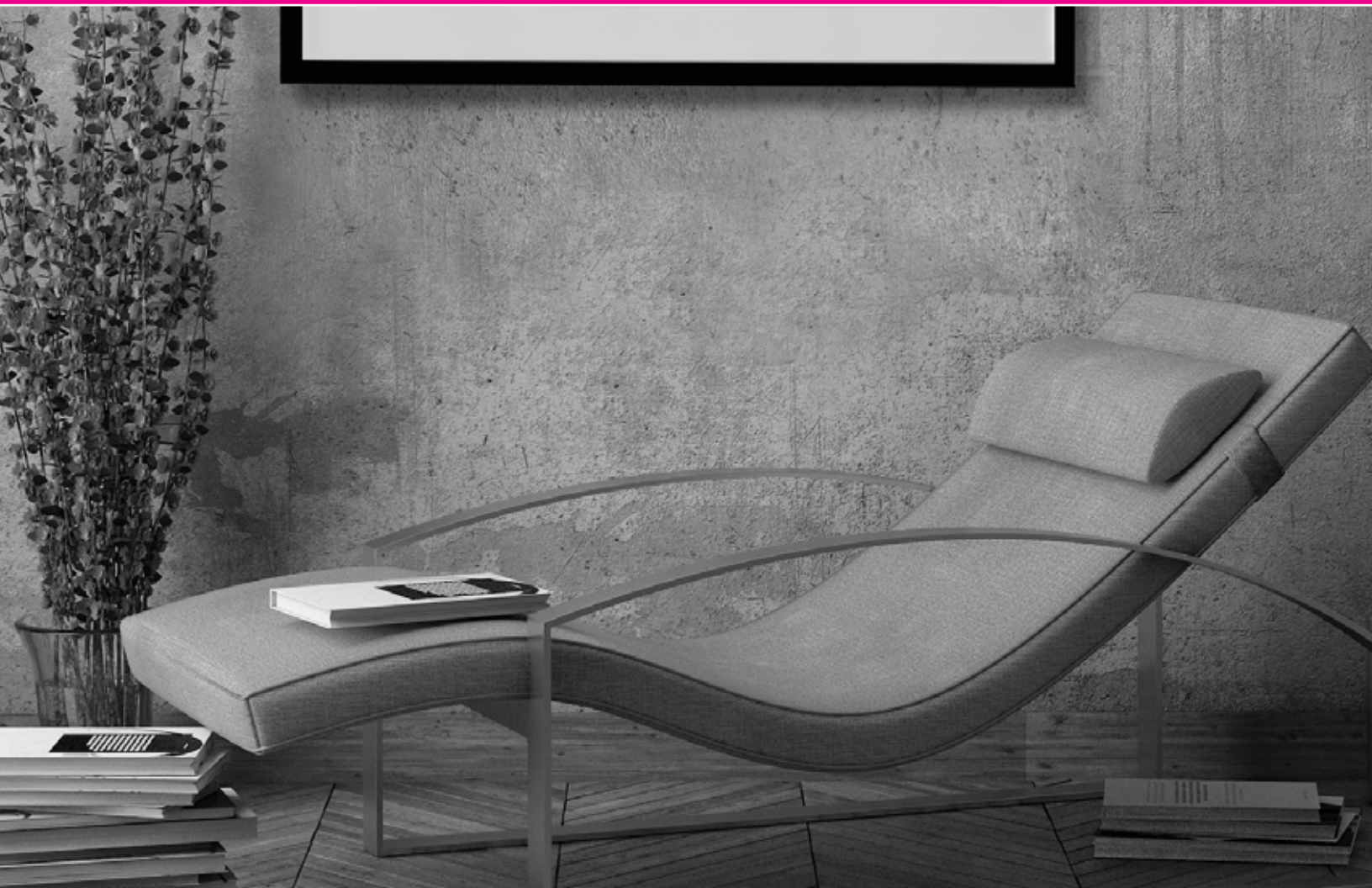
Tyrone Power



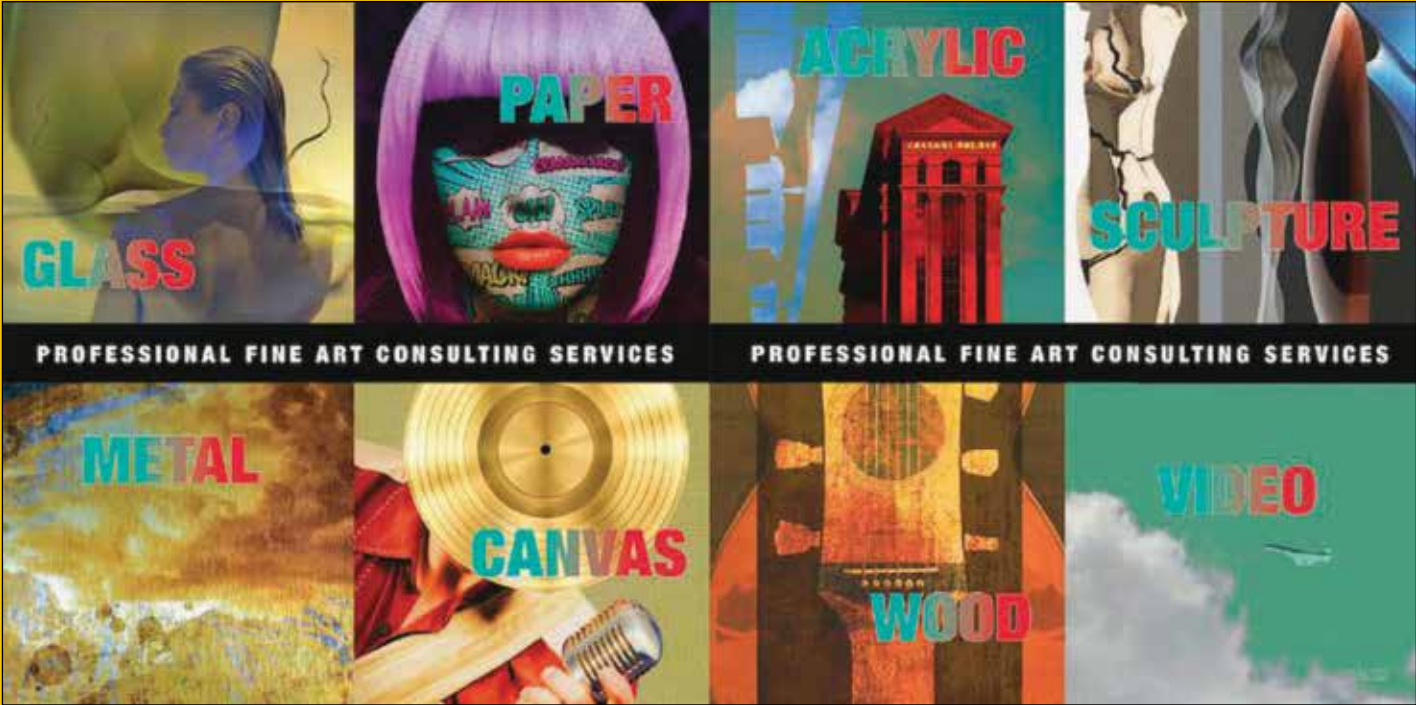


ACCURATE INSTALLATIONS

40



CUSTOM ART SPECIFICATION IDENTIFIER - CASI



PROJECT: BELTERRA CASINO HOTEL - CUSTOM ARTWORK PROGRAM

LOCATION: FLORENCE, INDIANA

CLIENT P.O. # DC-7231

GEFA WORK ORDER # 10363

DESIGN FIRM: RDH INTERESTS - LAS VEGAS, NEVADA

PURCHASING AGENT: BOYD GAMING - LAS VEGAS, NEVADA

DATE: 06.06.2022





GRAPHIC ENCOUNTER FINE ART

GEFA WORK ORDER # 10363 CLIENT PURCHASE ORDER # DC-7231

Page 1

GEFA - Belterra Casino Resort - Florence, Indiana -

Line# 1 Item# AA-1100

Artist	David J Williams	FLOOR Location Labels	JS-A-001 / Living Room
Substrate	Entrada Paper		
Location-Room Type	Junior Suite A	↑	
Quantity	20 this item		
Image Size	15 W 21 H		
Outside Dimension	24 W 30 H including frame		
Mat Dimensions	3" sides 3" top 3" bottom		
Mat Color	8 Ply White		
Mat Type	8 Ply		
Mat Style	Straight fit		
Outside Frame	N2610		
Inside Frame			
Scale	1.5"		
Glazing	Clear Acrylic		
Individual boxing this item	Provided		
Pallet #			

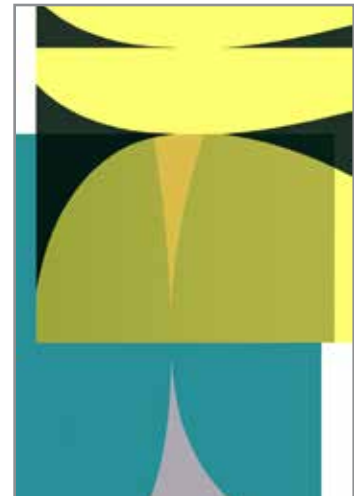


1 1/2" x 1 1/4" Satin Black Square
ITEM: N2610

Quick Overview
1 1/2" x 1 1/4" Satin Black Square

ADDITIONAL INFORMATION

Brand	Universal
Height	1 1/4"
Width	1 1/2"
Color	Black
Material	Wood
Rabbet	7/8"
Collection	Collins
Style	Contemporary, Matte Black & White



AA-1100



GRAPHIC ENCOUNTER FINE ART

GEFA WORK ORDER # 10363

CLIENT PURCHASE ORDER # DC-7231

Page 2

GEFA - Belterra Casino Resort - Florence, Indiana -

Line# 2 Item# AA-1101

Artist	David J Williams	FLOOR Location Labels	JS-A-002 / Bedroom
Substrate	Entrada Paper		
Location-Room Type	Junior Suite A	↑	
Quantity	20 this item		
Image Size	14 W 20 H		
Outside Dimension	24 W 30 H including frame		
Mat Dimensions	3" sides 3" top 3" bottom		
Mat Color	8 Ply White		
Mat Type	8 Ply		
Mat Style	Straight fit		
Outside Frame	240-7007		
Inside Frame			
Scale	2.00		
Glazing	Clear Acrylic		
Individual boxing this item	Provided		
Pallet #			



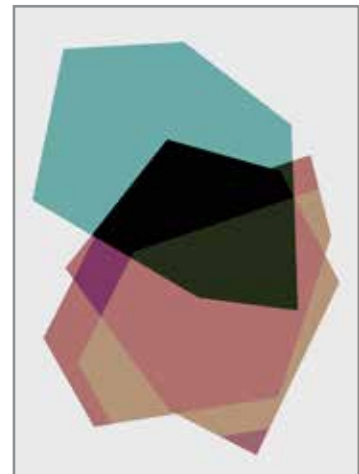
2" Gold Baltica AS II
ITEM: 240-7007

Quick Overview

2" Gold Baltica Arquati Signature II

ADDITIONAL INFORMATION

Brand Universal
 Height 1"
 Width 2"
 Color Gold/Black
 Material Wood
 Rabbet 1/2"
 Collection Baltica ASII
 Style Antique, Ornate



AA-1101



GRAPHIC ENCOUNTER FINE ART

GEFA WORK ORDER # 10363

CLIENT PURCHASE ORDER # DC-7231

Page 3

GEFA - Belterra Casino Resort - Florence, Indiana -

Line# 3 Item# AA-1102

Artist	David J Williams	FLOOR Location Labels	JS-A-003 / Bedroom
Substrate	Artist Canvas		
Location-Room Type	Junior Suite A		
Quantity	20 this item		
Image Size	76.75 W 22.75 H		
Outside Dimension	78 W 24 H including frame		
Mat Dimensions	N/A sides N/A top N/A bottom		
Mat Color	NA		
Mat Type	N/A		
Mat Style	N/A		
Outside Frame	G3507		
Inside Frame			
Scale	.375		
Glazing	N/A		
Individual boxing this item	Provided		
Pallet #			



3/8" x 2" Open Grain Grey Floater with Gold Danica
ITEM: G3507



Quick Overview

3/8" x 2" Open Grain Grey Floater with Gold

ADDITIONAL INFORMATION

Brand	Universal
Height	2"
Width	3/8"
Color	Grey
Material	Wood
Rabbet	1 1/2"
Collection	Danica
Style	Floater, Natural & Wood Grain



AA-1102

GRAPHIC ENCOUNTER FINE ART

ASPEN / LOS ANGELES / 1970



DOMESTIC FABRICATION SERVICES - LOS ANGELES, CALIFORNIA
ONE PACKING SLIP PER PALLET TO FACILITATE DISTRIBUTION
CUSTOM PALLETIZING - ONE LINE ITEM PER PALLET

GRAPHIC ENCOUNTER FINE ART

ASPEN / LOS ANGELES / 1970



HARRAH'S RECEIVING WAREHOUSE

200 COMMERCE DRIVE

EGG HARBOR NEW JERSEY 08234

PO# 10314/P122937

GR-ART-815A= 13PZ

GR-ART-815B= 13PZ

GR-ART-815C= 13PZ

GR-ART-814= 13PZ

FRAMES 52 PZ

TOTAL IN PO: 350 FRAMES

Pallet 1 of 6

WEIGHT: 516 Pounds
DIMENSIONS: 40" X 48" X 64"
4/30/2021
EXP-221

GRAPHIC ENCOUNTER FINE ART

ASPEN / LOS ANGELES / 1970

GEFA.ART 800.472.7445

CUSTOM PACKING SLIP

